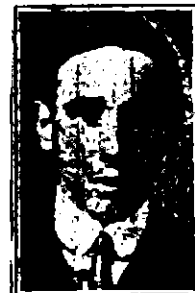


In Memory Of

JOHN HOLLINGWORTH

Private 21182
9th Bn., King's Own (Yorkshire Light Infantry)
who died on Monday, 27th September 1915



Born Glossop, Derbys. Enlisted Hyde, Cheshire Residence
Died How Killed in action Theatre of War France & Flanders

Additional Inf.

Commemorative Information

Memorial: LOOS MEMORIAL, Pas de Calais, France
**Grave Reference/
Panel Number:** Panel 97 and 98
Location:

Loos-en-Gohelle is a village about 5 kilometres north-west of Lens. The Loos Memorial forms the side and back of Dud Corner Cemetery where over 1,700 officers and men are buried, the great majority of whom fell in the Battle of Loos. Dud Corner Cemetery, which stands almost on the site of a German strong point, the Lens Road Redoubt, captured by the 15th (Scottish) Division on the first day of the battle, is located about 1 kilometre west of the village, on the N43, the main Lens to Bethune road. The Loos Memorial commemorates over 20,000 officers and men who fell in the area from the River Lys to the old southern boundary of the First Army, east and west of Grenay, and who have no known grave. It covers the period from the first day of the Battle of Loos to the date of the Armistice. On either side of the cemetery is a wall 15 feet high, to which are fixed tablets on which are carved the names of those commemorated. At the back are four small circular courts, open to the sky, in which the lines of tablets are continued, and between these courts are three semicircular walls or apses, two of which carry tablets, while on the centre apse is erected the Cross of Sacrifice.