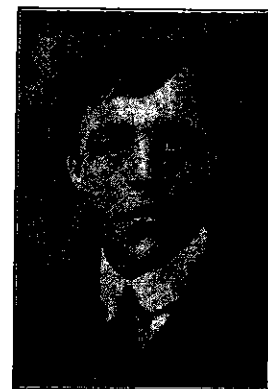


In Memory Of

**THOMAS SHERWIN**

Private 10310  
1<sup>st</sup> Bn., Cheshire Regiment  
who died on Thursday, 22<sup>nd</sup> October 1914



**Born** Kingston, Hyde, Ches.

**Enlisted** Hyde, Cheshire

**Died How** Killed in action

**Theatre of War** France & Flanders

**Additional Inf.** 75, George Street, Hyde.

**Commemorative Information**

**Memorial:** LE TOURET MEMORIAL, Pas de Calais, France

**Grave Reference/  
Panel Number:** Panel 13

**Location:**

Le Touret Memorial is located at the east end of Le Touret Military Cemetery, on the south side of the Bethune-Armentieres main road. From Bethune follow the signs for Armentieres until you are on the D171. Continue on this road through Essars and Le Touret village. Approximately 1 kilometre after Le Touret village and about 5 kilometres before you reach the intersection with the D947, Estaires to La Bassee road, the Cemetery lies on the right hand side of the road. The Memorial takes the form of a loggia surrounding an open rectangular court. The court is enclosed by three solid walls and on the eastern side by a colonnade. East of the colonnade is a wall and the colonnade and wall are prolonged northwards (to the road) and southwards, forming a long gallery. Small pavilions mark the ends of the gallery and the western corners of the court. The names of those commemorated are listed on panels set into the walls of the court and the gallery, arranged by Regiment, Rank and alphabetically by surname within the rank. Over 13,000 names are listed on the memorial of men who fell in this area before 25 September 1915 and who have no known grave.