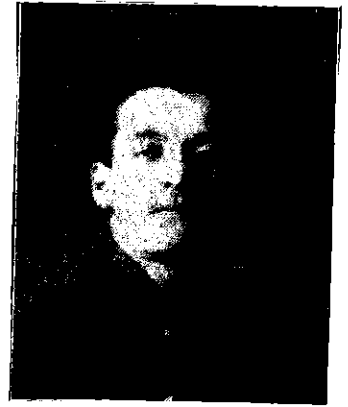


In Memory Of

HERBERT SMITH

Private 18923
9th Bn., Cheshire Regiment
who died on Monday, 28th August 1916
Age 18



Born Hyde, Cheshire

Enlisted Hyde, Cheshire

Died How Died of wounds

Theatre of War France & Flanders

Additional Inf. Son of Mrs. Smith, Castle Street, Newton.
One of 4 brothers killed in action.

Commemorative Information

Cemetery:

BAILLEUL COMMUNAL CEMETERY EXTENSION (NORD), Nord, France

**Grave Reference/
Panel Number:**

II. F. 182.

Location:

Bailleul is a large town in France, near the Belgian border, 14.5 kilometres south-west of Ieper and on the main road from St. Omer to Lille. From the Grand Place, take the Ieper road and 400 metres along this road is a sign indicating the direction of the cemetery. Turn right into a small road and follow for approximately 400 metres. The cemetery is on the right and the Communal Cemetery Extension is at the bottom end.

**Historical
Information:**

Bailleul was occupied on the 14th October 1914 by the 19th Brigade and the 4th Division. It became an important railhead, air depot and hospital centre; the 2nd, 3rd, 8th, 11th, 53rd, 1st Canadian and 1st Australian Casualty Clearing Stations were quartered in it for considerable periods. It was a Corps Headquarters until July 1917, when it was severely bombed and shelled; the burials in Plot III, Row D of the Extension bear witness to the resulting casualties. The Battle of Bailleul, one of the Battles of the Lys, began on the 13th and ended on the 15th April 1918. The town was defended by the 29th, 31st, 34th and 59th (North Midland) Divisions and the 4th Guards and 147th Brigades, but it was entered by the Germans in the evening of the 15th. By the end of the month the enemy advance was held at St. Jans-Cappel and Meteren, North and West of Bailleul; and the Allied artillery had destroyed the town. It was found empty and re-occupied on the 30th August 1918. The earliest British burials were made at the East end of the Communal Cemetery; but by April 1915 the space available was filled, and the Extension was begun.