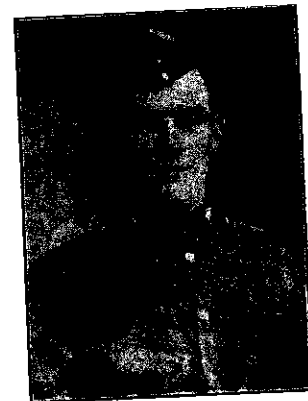


*In Memory Of*

**JOHN THOMSON**

**Private 7001  
1<sup>st</sup> Bn., Cheshire Regiment  
who died on Thursday, 22<sup>nd</sup> October 1914. Age 33**



**Born** St. Thomas, Hyde, Ches.

**Enlisted** Stockport

**Died How** Killed in action

**Theatre of War** France & Flanders

**Additional Inf.** Husband of Emily J. Thomson (nee Foote) of 137 Mottram New Road, Hyde, Cheshire. Also of Boston Street, Hyde.

**Commemorative Information**

**Memorial:** LE TOURET MEMORIAL, 200, 2

**Grave Reference/  
Panel Number:** Panel 13

**Location:**

Le Touret Memorial is located at the east end of Le Touret Military Cemetery, on the south side of the Bethune-Armentieres main road. From Bethune follow the signs for Armentieres until you are on the D171. Continue on this road through Essars and Le Touret village. Approximately 1 kilometre after Le Touret village and about 5 kilometres before you reach the intersection with the D947, Estaires to La Bassee road, the Cemetery lies on the right hand side of the road. The Memorial takes the form of a loggia surrounding an open rectangular court. The court is enclosed by three solid walls and on the eastern side by a colonnade. East of the colonnade is a wall and the colonnade and wall are prolonged northwards (to the road) and southwards, forming a long gallery. Small pavilions mark the ends of the gallery and the western corners of the court. The names of those commemorated are listed on panels set into the walls of the court and the gallery, arranged by Regiment, Rank and alphabetically by surname within the rank. Over 13,000 names are listed on the memorial of men who fell in this area before 25 September 1915 and who have no known grave.

**Historical Information:**

The Memorial in Le Touret Military Cemetery, Richebourg-l'Avoue, is one of those erected by the Commonwealth War Graves Commission to record the names of the officers and men who fell in the Great War and whose graves are not known. It serves the area enclosed on the North by the river Lys and a line drawn from Estaires to Fournes, and on the South by the old Southern boundary of the First Army about Grenay; and it covers the period from the arrival of the II Corps in Flanders in 1914 to the eve of the Battle of Loos. It does not include the names of officers and men of Canadian or Indian regiments; they are found on the Memorials at Vimy and Neuve-Chapelle.