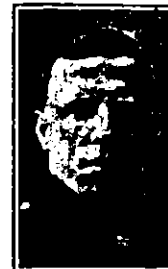


In Memory Of

ALLEN WOOD

Private 35460
13th Bn., Cheshire Regiment
who died on Saturday, 2nd September 1916.



Born Hyde, Cheshire **Enlisted** Hyde, Cheshire **Residence**

Died How Killed in action **Theatre of War** France & Flanders

Additional Inf. Son of Mr .M. Wood, of 126, Lodge Lane, Hyde, Cheshire

Commemorative Information

Cemetery: BOUZINCOURT COMMUNAL CEMETERY EXTENSION, Somme, France
Grave Reference/ II. H. 14.
Panel Number:

Location: Bouzincourt is a village 3 kilometres north-west of Albert on the road to Doullens (D938). The Communal Cemetery is on the northern side of the village and is signposted on the main road (D938) through the village.

Historical Information: Bouzincourt village was used as a Field Ambulance station from early in 1916 to February, 1917, when the British line went forward from the Ancre. It was in German hands for a few days to the spring of 1918. The Cemetery Extension was begun in May, 1916, and used until February, 1917. In the early part of July, 1916, it was used not only for burials from the Field Ambulances but also for the interment of many soldiers killed in action and brought back from the line. It was reopened from the end of March, 1918 until the following September, and used largely by the 38th (Welsh) Division. Twenty graves were concentrated in 1919 from the immediate neighbourhood of Bouzincourt into Plot III, Row A; and 108 more were brought into Plots I, III and IV in 1924-25 from the various Somme battlefields and from Framerville Churchyard. There are now nearly 600, 1914-18 war casualties commemorated in this site. Of these, over 100 are unidentified and special memorials are erected (in Plot III, Row B, and Plot IV, Row A) to two soldiers from the United Kingdom, known or believed to be buried among them. The Cemetery Extension covers an area of 1,851 square metres and is enclosed by a rubble wall. FRAMERVILLE CHURCHYARD contained the graves of two Australian soldiers who fell in August, 1918. (The village was captured by the 2nd Australian Division on the 9th August.) They were at the South end of the Churchyard, which is now closed to burials and was later made a public square.